

For Her



COLOUR ANALYSIS

- Introduction to Personal Color
- Style, Preferences and Image Analysis
- Skin Tone Analysis
- Fabric Draping - Seasonal Palette, Best achromatic colours and whites
- Cosmetic + Lip Colour Analysis
- Hair Color Swatching
- Accessories Color Swatching (Gold, Silver, Rose Gold, Titanium)



BODY + FIT ANALYSIS

- Facial Structure Analysis (Face Shape, Proportions & Visual Weight)
- Body Analysis (Body Line, Bone Structure & Proportions)
- Draping & Garment Compatibility Testing
- Accessory & Proportion Analysis (Earrings size, Eyewear shapes and styles, Necklines, Patterns & Fabrics)
- Silhouette Visualisation & Fitting
- Style Integration Guidelines (e.g. Necklines, Sleeve Types, etc.)



[KRISFLYER EXCLUSIVE] IMAGE + BRANDING

- Primary & Secondary Style Essence - Youthful, Ethereal, etc.
- Facial Mood - Elegant, Feminine, etc.
- Visual Language Translation - How do you express this through colour combinations, textures, accessories, styling choices
- Outfit Strategy/Formulas Situational Styling - Work, Social, Travel, Photos



For Him



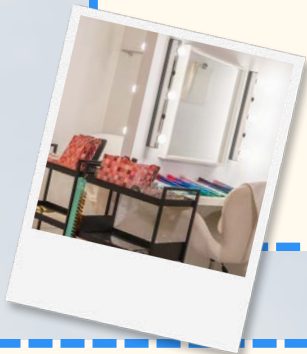
COLOUR ANALYSIS

- Introduction to Personal Color
- Style, Preferences and Image Analysis
- Skin Tone Analysis
- Fabric Draping - Seasonal Palette, Best achromatic colours and whites
- Suit & Denim Color Draping
- Hair Color Swatching
- Accessories Color Swatching (Gold, Silver, Rose Gold, Titanium)



BODY + FIT ANALYSIS

- Facial Structure Analysis (Face Shape, Proportions & Visual Weight)
- Body Analysis (Body Line, Bone Structure & Proportions)
- Hair Analysis
- Accessory & Proportion Analysis (Ties, Eyewear, Necklines, Patterns, Fabrics, etc.)
- Silhouette Visualisation & Fit Assessment
- Style Integration Guidelines (e.g. Jacket Cuts, Sleeve Length, Shirt Fit, etc.)



[KRISFLYER EXCLUSIVE] IMAGE + BRANDING

- Image Projections - Refined, Approachable, etc.
- Facial Mood - Classic, Dynamic, etc.
- Visual Language Translation - How do you express this through colour combinations, textures, accessories, styling choices
- Outfit Strategy/Formulas Situational Styling - Work, Social, Travel, Photos

